



Putnam Street Needham, MA

These homes feature approximately 2,250 square feet. We provide a spacious and welcoming foyer with powder room, a large and central family room with fireplace which opens to the dining area and island focused kitchen. Off the foyer is a study/den or playroom for households with small children. The second level features a master bedroom with large walk-in closet & private bath along with two additional bedrooms and a second full bath and laundry.

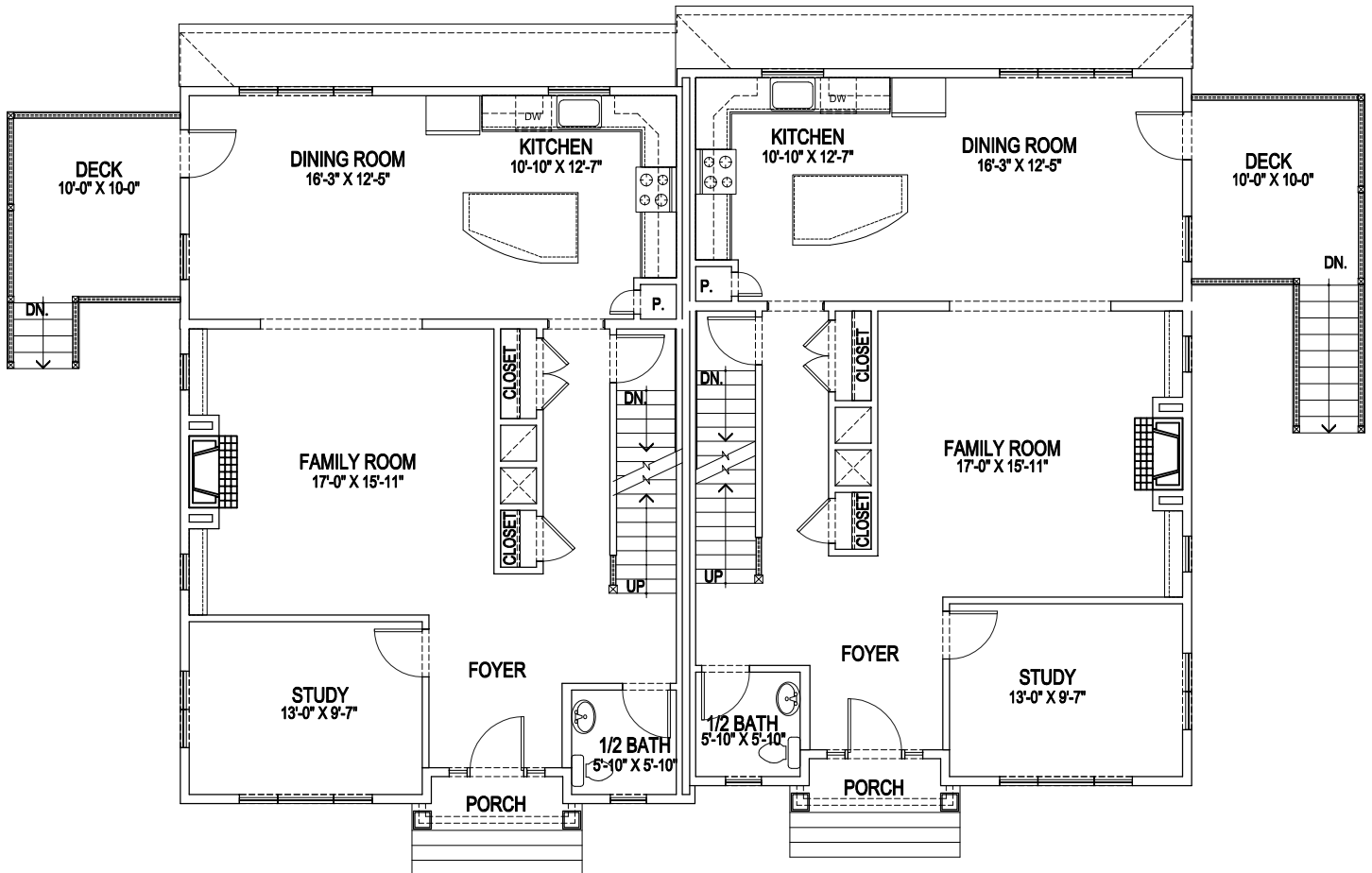
The lower level has an entry foyer with storage and the two gar garage. Each home also has a deck off the dining area as well as a protected front porch with Craftsman columns.





Putnam Street

Needham, MA

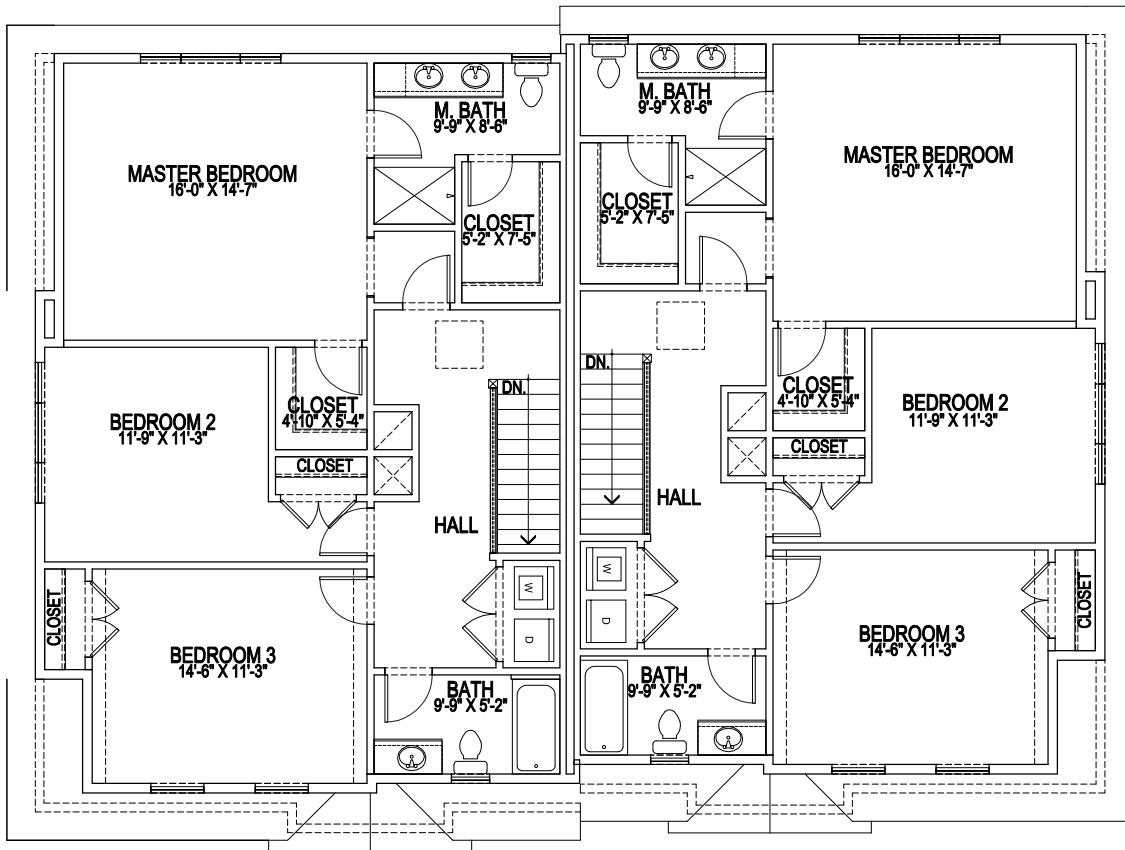


	OVERALL	CONDO
BASEMENT	94 SQ. FT.	84 SQ. FT.
FIRST FLOOR	1117 SQ. FT.	1053 SQ. FT.
SECOND FLOOR	1065 SQ. FT.	1003 SQ. FT.
TOTAL	2276 SQ. FT.	2140 SQ. FT.

FIRST FLOOR PLAN



Putnam Street
Needham, MA

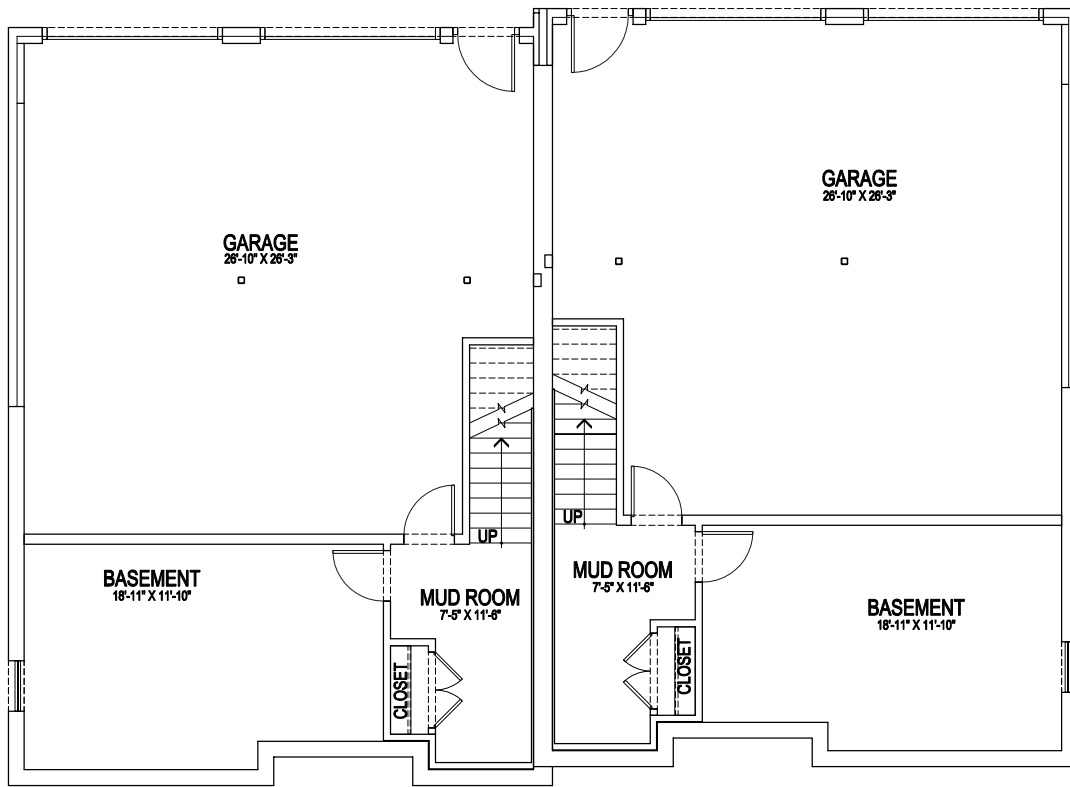


	OVERALL	CONDO
BASEMENT	94 SQ. FT.	84 SQ. FT.
FIRST FLOOR	1117 SQ. FT.	1053 SQ. FT.
SECOND FLOOR	1065 SQ. FT.	1003 SQ. FT.
TOTAL	2276 SQ. FT.	2140 SQ. FT.

SECOND FLOOR PLAN



Putnam Street
Needham, MA



	OVERALL	CONDO
BASEMENT	94 SQ. FT.	84 SQ. FT.
FIRST FLOOR	1117 SQ. FT.	1053 SQ. FT.
SECOND FLOOR	1065 SQ. FT.	1003 SQ. FT.
TOTAL	2276 SQ. FT.	2140 SQ. FT.

FOUNDATION/ BASEMENT PLAN