



Elizabeth Brook Craftsman II Boxborough, MA

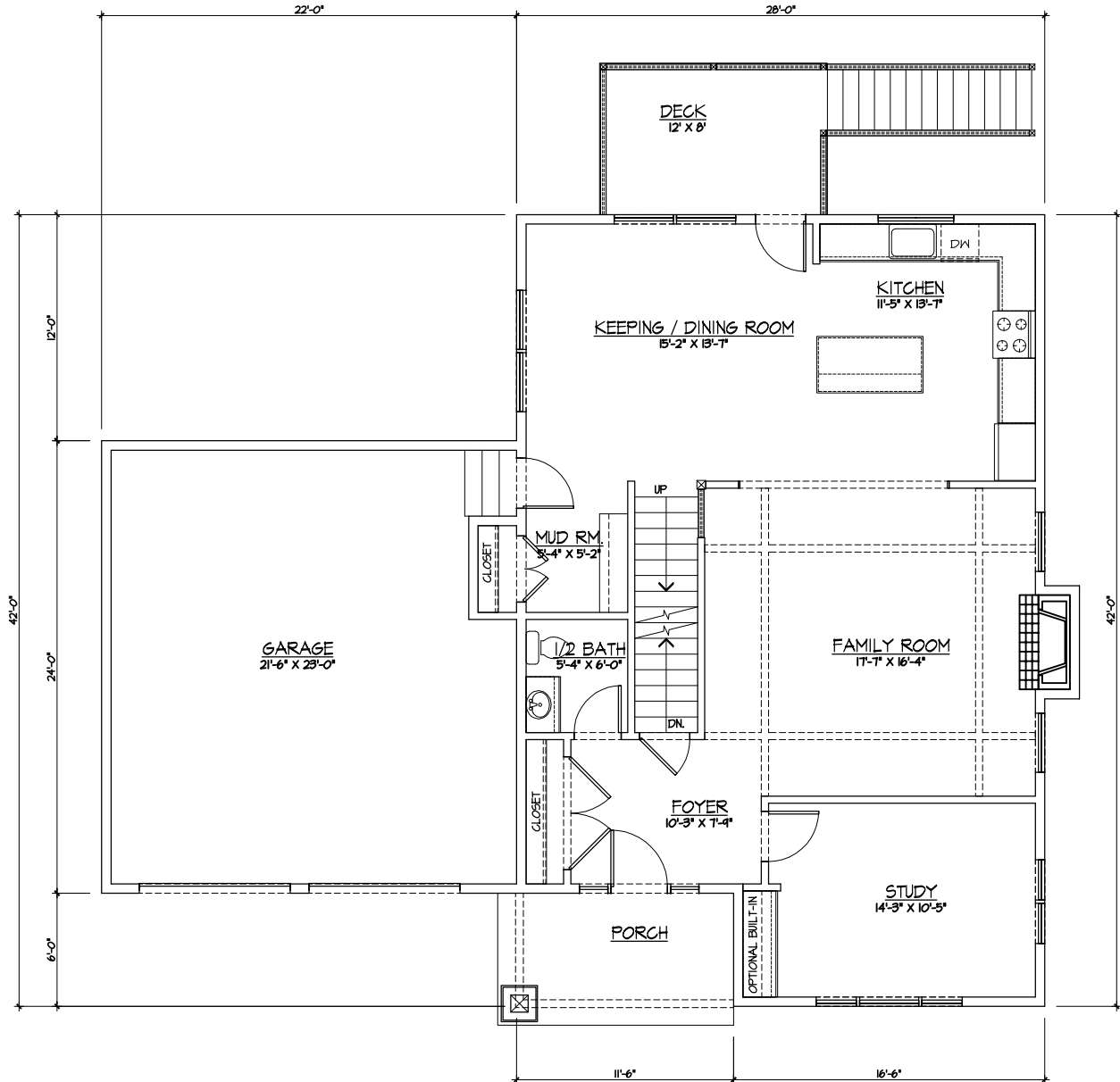
The Craftsman II offers over 2,600 square feet with our traditional layout with a two car attached garage and loft. The home features three bedrooms, 2.5 baths, study, front porch and rear deck with all the traditional bells and whistles (hardwood, granite, stainless).

The loft provides flexible living space as a 2nd level family area, office or kids play room. We also moved the laundry upstairs for easier use. Homes feature a partial walk out with rear meadow views.





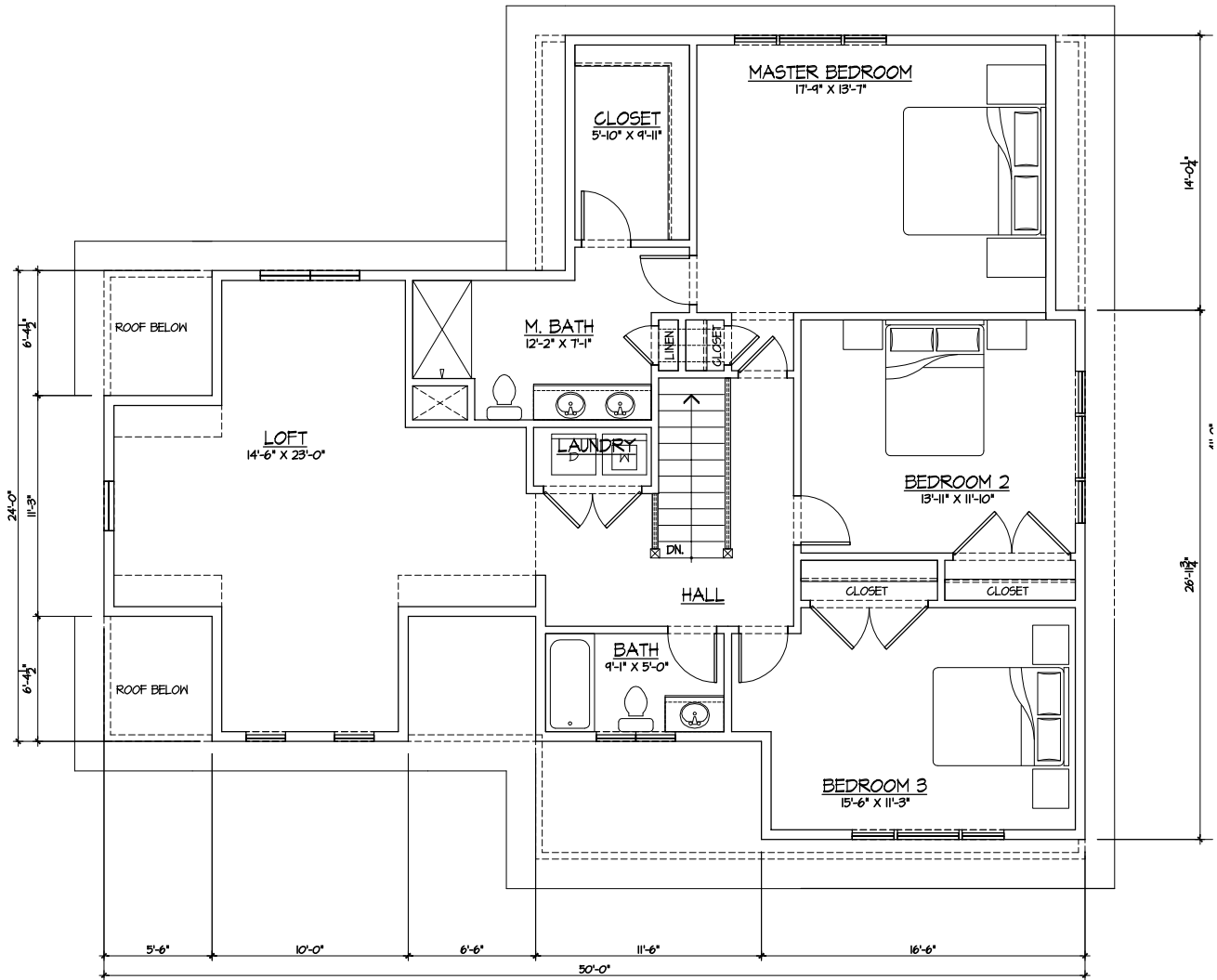
Elizabeth Brook
Craftsman II
 Boxborough, MA



FIRST FLOOR PLAN
 1121 SQ. FT.



Elizabeth Brook
Craftsman II
 Boxborough, MA



SECOND FLOOR PLAN - 11 PITCH ROOF
 1468 SQ. FT.