



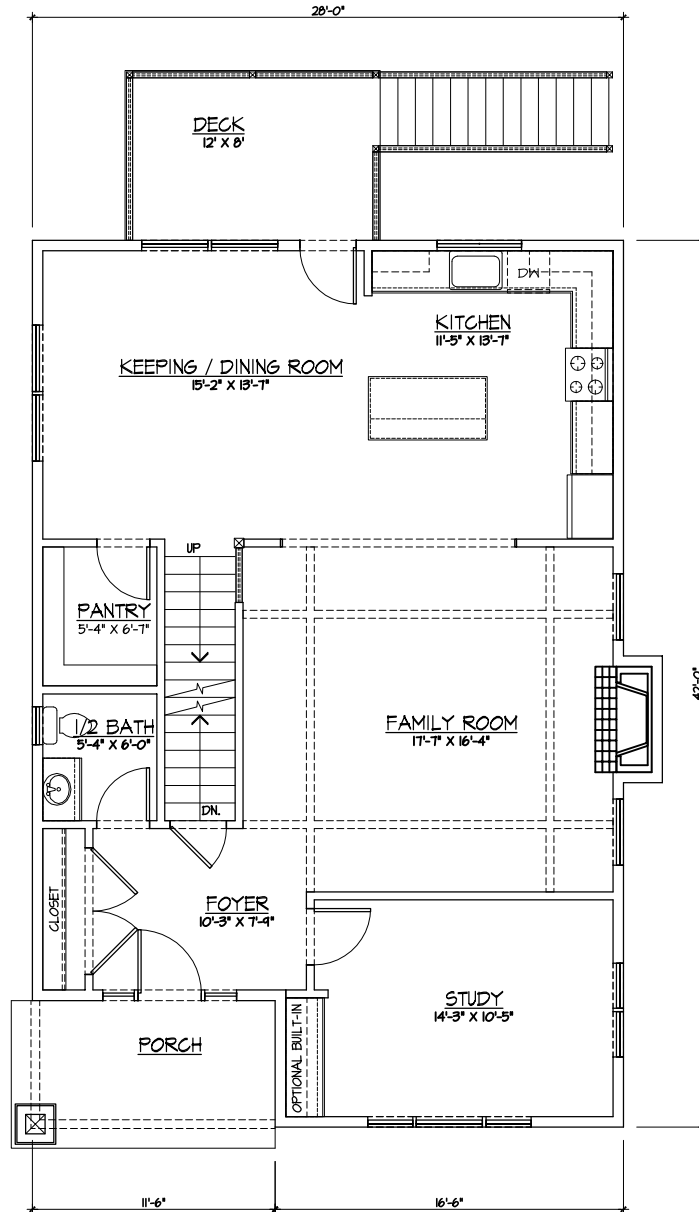
Elizabeth Brook Craftsman I Boxborough, MA

The **Craftsman I** will offer approximately 2,200 square feet with our traditional layout with adjacent detached two car garage. These feature three bedrooms, 2.5 baths and all the traditional bells and whistles (hardwood, granite, stainless) a nice front porch and rear deck overlooking the meadow flowing down to the brook.





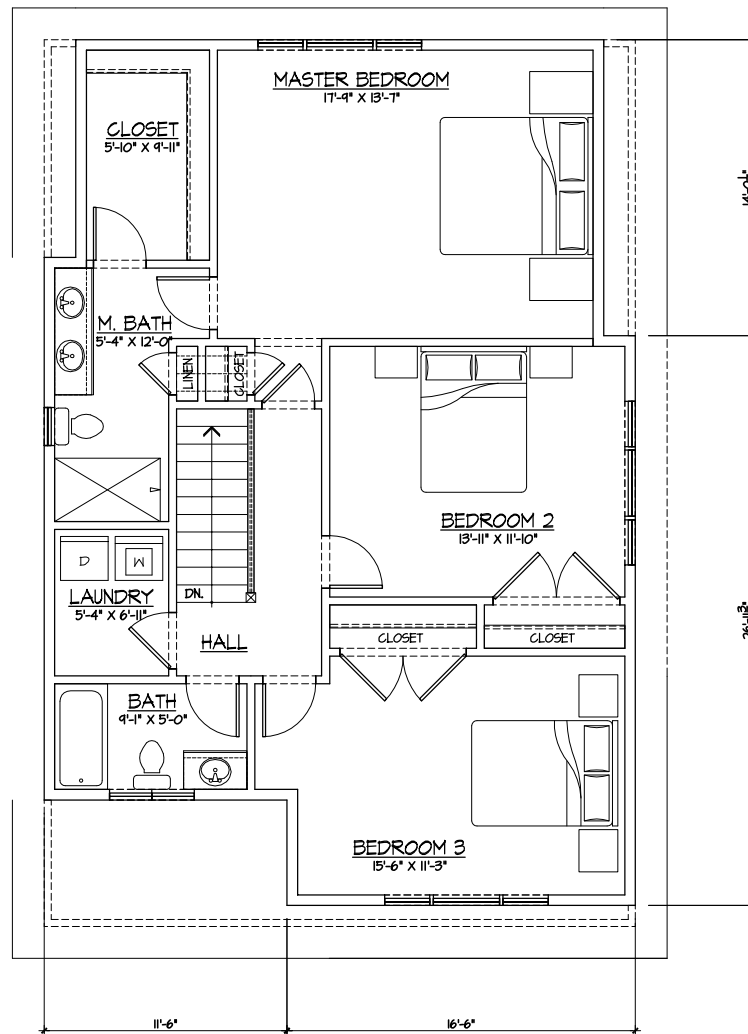
Elizabeth Brook
Craftsman I
Boxborough, MA



FIRST FLOOR PLAN



Elizabeth Brook
Craftsman I
Boxborough, MA



SECOND FLOOR PLAN